

File eXpress

©1996 Ruskin Group, Inc. All rights reserved. Shareware Release 1.2v0

"When it absolutely, positively, has to be there...now."

Contents at a Glance

Overview	2
Introduction	3
System Requirements.....	6
Installation.....	6
Shipping a File or Folder.....	8
Changing the Default Shipping Instructions.....	11
Receiving Packages and Extracting Their Contents.....	12
Defining Your Personal Preferences.....	14
Controlling File eXpress via AppleScript.....	20
Software Usage Agreement.....	22

Overview

This Shareware release of File eXpress includes a control panel and two applications designed to provide document transfer services over AppleTalk and TCP/IP networks.

Together, the fully recordable and scriptable FX•Engine and FX•Packager bring point-to-point document transfer and compression services to your desktop. In brief, you can use File eXpress to send any file on your Macintosh to any other machine running File eXpress just by “dropping” the item to send on the FX•Packager’s mailbox icon. File eXpress also creates a single “FX•InBox” folder on your desktop where you’ll be able to quickly access items sent to you by other File eXpress users.

There are no user accounts to create, server applications to manage, nor folders to “share.”

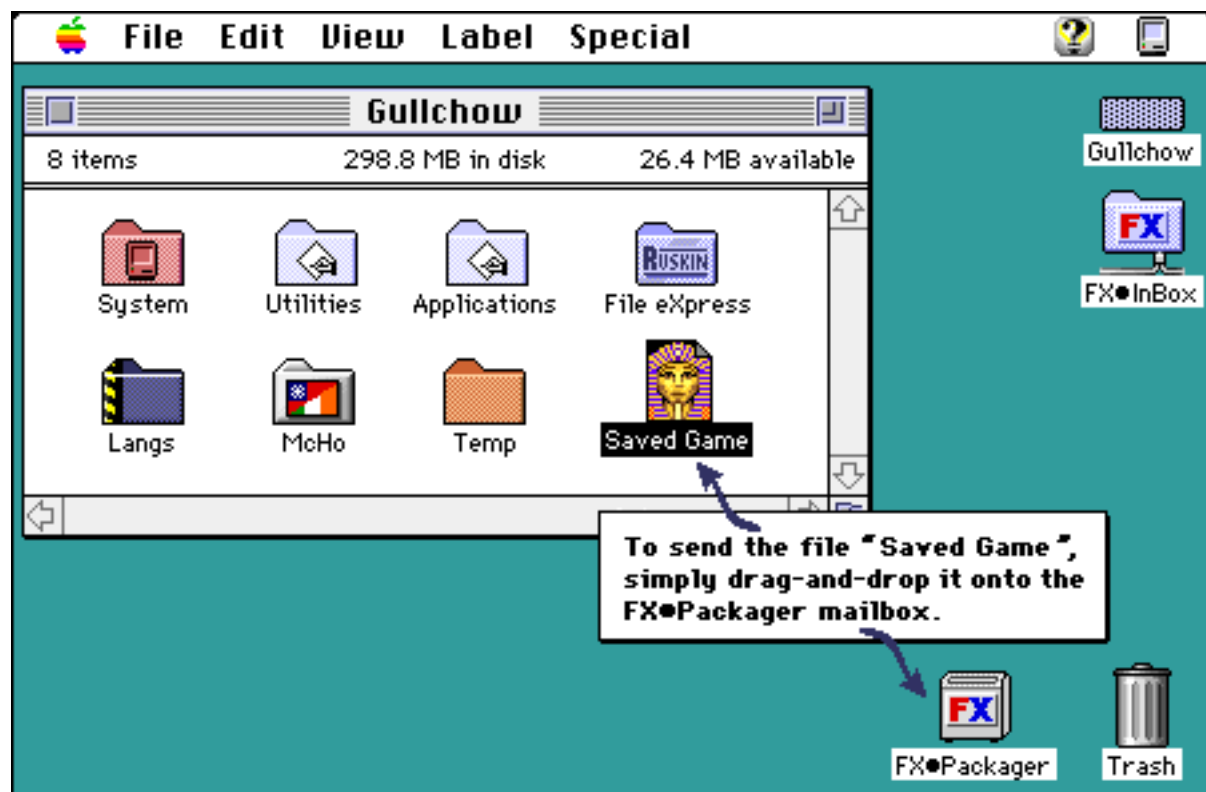
Unlike some other AppleTalk or TCP/IP based file transfer methods where you expose entire folder hierarchies on your machine to the inspection of others, with File eXpress’s “package shipping” model your files are only copied when and where you choose. You wouldn’t let the phone company rummage through your house to deliver their invoices or collect your payments, so why let folks into your computer to drop-off or pick-up files? With File eXpress you’ll always be in complete control of which files are copied from your machine and to whom those files are sent - without the headaches of having to maintain sharing services with their associated accounts and access privileges. File eXpress also allows those of you who are currently forced to strong-arm an expensive email system into providing basic document transfer services to skip that extra step of “enclosing” your files in an empty email message.

File eXpress will deliver your files over AppleTalk and TCP/IP at the same time. So you’ll be able to use a single tool with the same user interface to send files to other File eXpress users regardless of which network protocol they use. And, as File eXpress was built from the ground up to be completely asynchronous, you’ll be able to continue with your work while File eXpress sends and receives your packages in the background.

The File eXpress documentation that follows introduces the “Package” metaphor and describes how to use this Shareware release of File eXpress.

Introduction

File eXpress is built on a package shipping metaphor. Just as you might place some items in a box to ship them across the country, File eXpress copies your files into a “package” that it then delivers across the network. Simply select the files or folders you would like to send and drop them on the FX•Packager mailbox icon in the Finder. The packager will then display a dialog box asking where you would like to send those items. Once you’ve entered a destination, File eXpress will copy the original items into a “package” that will be delivered in the background while you continue with your work. That’s all there is to sending a file across the office, or, if you’re on the Internet, across the country. Simple, isn’t it? Further, anyone who has their own copy of File eXpress can send you files that will be placed in an “FX•InBox” folder on your desktop. This means you’ll always know where to look for the files that other File eXpress users have sent to you.



Typical Usage of FX•Packager

Specifically, this Shareware release of File eXpress:

- Allows you to send files to any Macintosh on the same network running an FX•Engine

- Supports the simultaneous delivery of the same files over both AppleTalk and TCP/IP networks
- Runs asynchronously - so you can continue with your work while File eXpress sends, receives and unpacks your packages in the background
- Provides full access to the set of File eXpress services via AppleScript as fully Recordable and Scriptable applications
- Supports automatic compression of files or folders before sending them across the network. This not only minimizes network traffic, but reduces the storage requirements on the destination machine - perfect for cross-country network transfers or home-grown backup systems.
- Are “Fat Binaries” that have been accelerated for Apple’s Power Macintoshes
- Provide “deferred delivery” capabilities that allow you to send packages to users regardless of whether their machines are currently available - File eXpress will keep trying to send your package for up to three days before giving up.

With this release, you'll also find a menu item titled “Register File eXpress...” under the Apple Menu of the FX•Packager that contains instructions on how to register your copy. Although you may use File eXpress for as long as you'd like for any non-commercial purposes without registering, we hope you'll take advantage of the chance to receive technical support, a copy of the latest release and a set of sample Scripts and Stacks that show the many uses of File eXpress.

Benefits of using File eXpress

Unlike file sharing methods that impose the burden of creating accounts and maintaining folder privileges to keep your data secure, you only have to interact with File eXpress when you're actually sending a package.

We think you'll appreciate File eXpress for its ability to meet your document transfer needs without the inherent complications or security risks of sharing folders or managing a server. Just think: no “Guest” access to accidentally leave on, no more having to specify long paths to the locations of your files for friends only to realize such a folder isn't being shared, no more phone calls from co-workers who forgot their password or, worse yet, might have jotted it down on the cover-page of that fax to your competitors. And, for those of you who are TCP/IP based, you won't have to maintain the accounts or server software associated with FTP or email gateways to have the same drag-and-drop and FX•InBox interface used by the folks on AppleTalk.

A primary benefit of the File eXpress package shipping metaphor is that you remain in complete control of your files - including which files are sent, when they are sent, and to precisely whom they are sent. This “push” model of file sharing ensures:

- You control *which* files are sent without having to manage sharing privileges for every folder that contains something you might want to share. You can ship any item at any time by dropping it on the mailbox icon, without ever having to open your machine to the security risks of file sharing.
- You control *when* files are shipped. This keeps people from “picking up” documents that you might be sharing but haven’t finished working on yet. So you’ll always know the version of the file your co-workers are using.
- You control *where* those files will be sent without having to maintain a set of users or group accounts to ensure only the appropriate people receive your files.

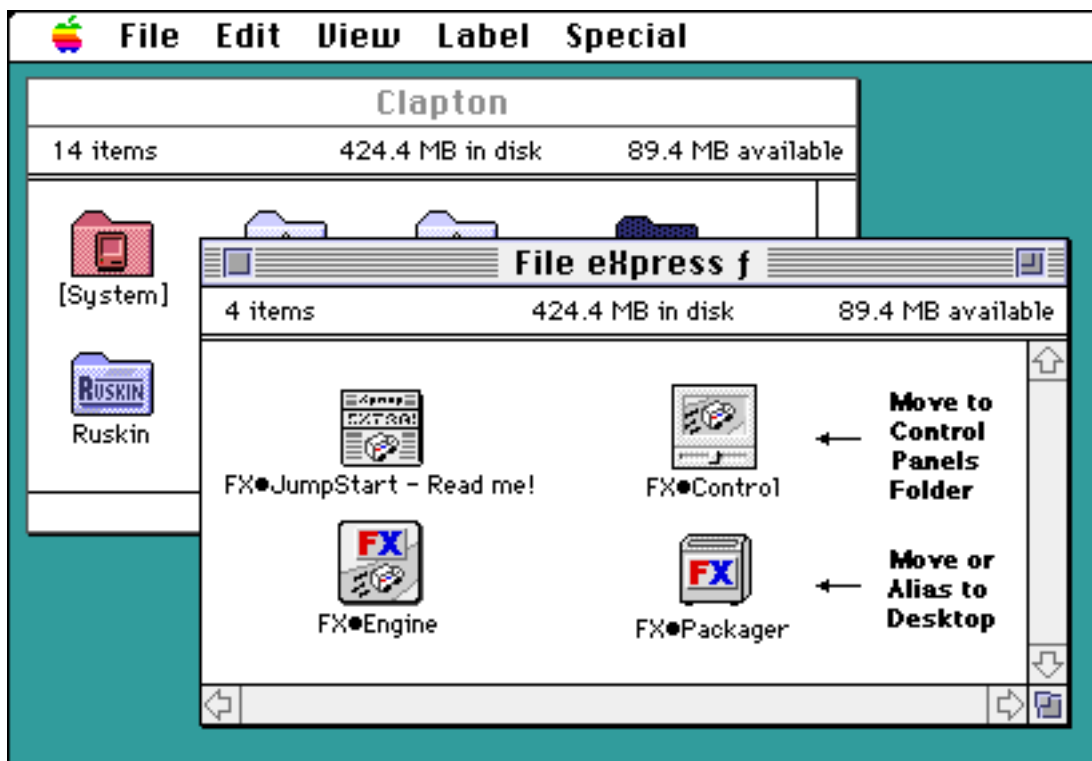
Of course, you’ll also maintain complete control over the files that others send to you! That is, other File eXpress users can send you files but they’ll only be placed in the easily managed FX•InBox folder on your desktop. This keeps folks from accidentally, maliciously, or otherwise overwriting any of the files on your machine - so you’ll never have to worry about someone corrupting your System Folder or accidentally overwriting this month’s sales receipts with an older file. Further, you’ll never waste your time searching through your co-worker’s shared hard drive trying to find the latest version of that important report. When the report is ready, your File eXpress enabled co-worker will simply send you the latest version. No more “false” starts or synchronization problems.

Developed by the **Ruskin Group, Inc.**, File eXpress is the first of a series of network savvy document management utilities. We look forward to hearing from you and hope that you’ll send your comments, suggestions, and feedback to **dobil@tasman.hss.cmu.edu**.

System Requirements

In order to install File eXpress, you'll need a machine running System 7.1.2 or later. Further, if you plan to send files via TCP/IP, you'll need MacTCP version 2.0.4 or later for optimal TCP/IP performance. The File eXpress applications are all "32-bit clean" and should run under Virtual Memory, the Modern Memory Manger and File Sharing. Open Transport 1.1 (OT) is fully supported on Macs that have installed 7.5.3 or the "System 7.5 System Update 2.0".

Installation



Installation of File eXpress Components

To install the File eXpress applications, follow these six steps:

- 1) Remove any existing copies of File eXpress from your machine by throwing them in the Trash, rebooting your Mac and choosing "Empty Trash" from the "Special" menu in the Finder. Be sure to throw away any "1.1v0", "1.0v0", " 1" or " 2" versions of the FX•Engine you may have in the "Startup Items" folder inside your System Folder. You should also throw away any "FX•Preferences" folder that may already exist in Preferences folder within your System Folder.
- 2) Place a copy of the "File Express" folder anywhere on your boot volume.
- 3) From within the "File Express" folder you placed on your boot volume:

Drag the “FX•Control” Control Panel to the “Control Panels” folder of your boot volume’s “System” folder. You should simply be able to drop the Control Panel on your System Folder, which will automatically place it in your “Control Panels” folder.

Drag the “FX•Packager” application (or an alias to it) to an easy to reach place on your desktop in the Finder.

- 4) Reboot your Macintosh - you should see the “Mail Truck” startup icon appear on your screen during the boot process.

Don’t be alarmed if you see a red X, which denotes your File eXpress system isn’t currently running. You’ll have to ‘initialize’ your File eXpress system as described in item 5 below.

- 5) Double-click on the “FX•Packager” icon to run the Packager and agree to the license agreement. You may use File eXpress without registering for any non-commercial purposes for as long as you’d like.
- 6) You may want to open the “FX•Control” Control Panel to establish your default File eXpress “receive” preferences along with the network protocols you would like the FX•Engine to support.

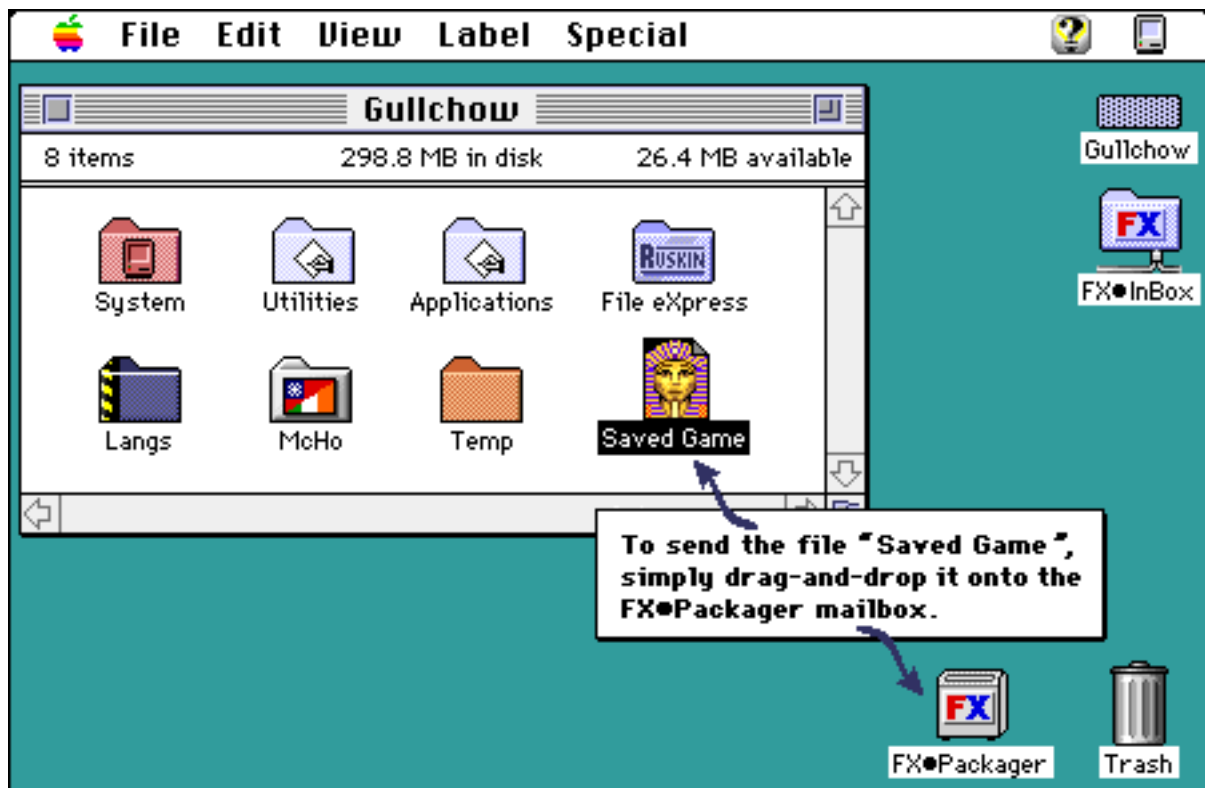
If you’ve done all of the above, you’ll see a folder named “FX•InBox” appear on your desktop where you’ll be able to find files sent to you by other File eXpress users. If you have the Finder Scripting extension installed in your “Extensions” folder, then when the FX•Engine is ready to receive files from other File eXpress users you’ll see “network cables” attached to the FX•InBox folder on your desktop. Note, though, that only you can see what’s in your “FX•InBox” - unless, of course, you use File Sharing to export the contents of your mailbox.

If you experience problems with the Drag-and-Drop interface to the FX•Packager, you may need to rebuild your desktop database file. To do this, depress the Command and Options keys the next time you boot your machine until the Finder displays a dialog box asking if you would like to rebuild your desktop.

If you don’t plan to receive files from other File eXpress users, or you always know when you’re about to receive a file, you can leave the engine set to “off” in the FX•Control Panel. But then it will be up to you to explicitly start the engine before you launch the packager or when you want to receive packages from other File eXpress users. Remember, you can’t receive packages from other users if you’ve turned off the FX•Engine via the FX•Control panel.

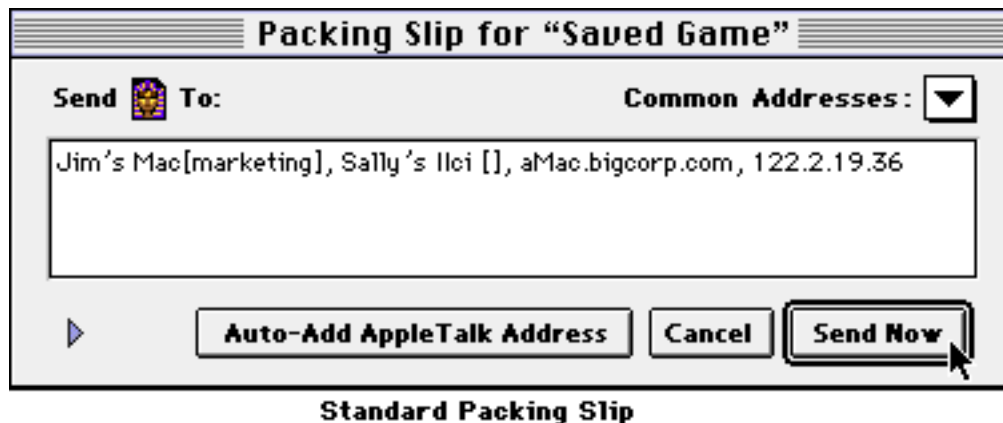
Shipping a File or Folder

To ship any item, such as an individual file or even a folder, select the item to ship in the Finder and drop it on the FX•Packager mailbox icon. You can also send a file from within the FX•Packager by selecting the “Send Item...” option from the File menu. When you’ve selected a file or folder for sending, the packager creates a “package” that will then be shipped to a destination Macintosh across the network.



Typical Usage of FX•Packager

To allow you to specify the destination of that package, the FX•Packager will display a “Packing Slip” dialog box. By completing the “Packing Slip” you’ll tell the packager where it should have the FX•Engine deliver your package. Type the address of the destination Macintosh in the “Send To:” edit field. To send to more than one destination, simply separate each destination’s address with a comma. Once you’ve entered the destination address or addresses, click on the “Send Now” button and the package will be queued for delivery by the FX•Engine.



A Few Notes On Addressing Your Packing Slip

As File eXpress allows you to send files using both AppleTalk and TCP/IP, you'll tell the packager which protocol to use for each destination implicitly by the address format you use to specify that destination. For example, to send files over AppleTalk use the AppleTalk address format and to send files over TCP/IP use the TCP/IP format - both of which are described below. Feel free to mix and match delivery methods as your packages can be sent using AppleTalk and TCP/IP at the same time (provided, of course, that your machine is connected to both types of networks.)

AppleTalk addresses are Macintosh names followed by the name of the AppleTalk "Zone" where that machine resides between two brackets. Such addresses are in the form "*machinename [zonename]*." When you specify an AppleTalk address, File eXpress will send the package over AppleTalk to that destination. Although the brackets are required to tell the packager you would like to send a package using AppleTalk, you may omit the zone name for any Macintosh which resides in the same zone as your computer. For example:

Jim's Mac[marketing]	is the AppleTalk address for the Mac named "Jim's Mac" which is located in the "marketing" zone
Sally's IICI[]	is the AppleTalk address for the Mac named "Sally's IICI" which is in the same zone as the user sending the file

TCP/IP addresses are the standard “dot” names for Macintoshes running MacTCP. You may specify either a straight IP address (e.g., 122.2.19.36) or the named version (e.g., aMac.bigcorp.com) if your environment supports Domain Name Resolution. For example:

aMac.bigcorp.com	is the named IP address for a Mac named “aMac” which is located in the “bigcorp.com” domain
122.2.19.36	is simply a direct IP address for a Mac connected via TCP/IP

When Files Can't Be Delivered

Occasionally files cannot be delivered because the address you've entered on the packing slip cannot be found. To minimize invalid addresses you can click on the “Auto-Add AppleTalk Destination” button that will guide you through the selection of a destination machine that is running an FX•Engine and is accepting deliveries via AppleTalk. Unfortunately, we don't have a shortcut to help with the validating TCP/IP addresses yet, so be sure add any common TCP/IP addresses to the “Common Addresses” menu in the Packing Slip.

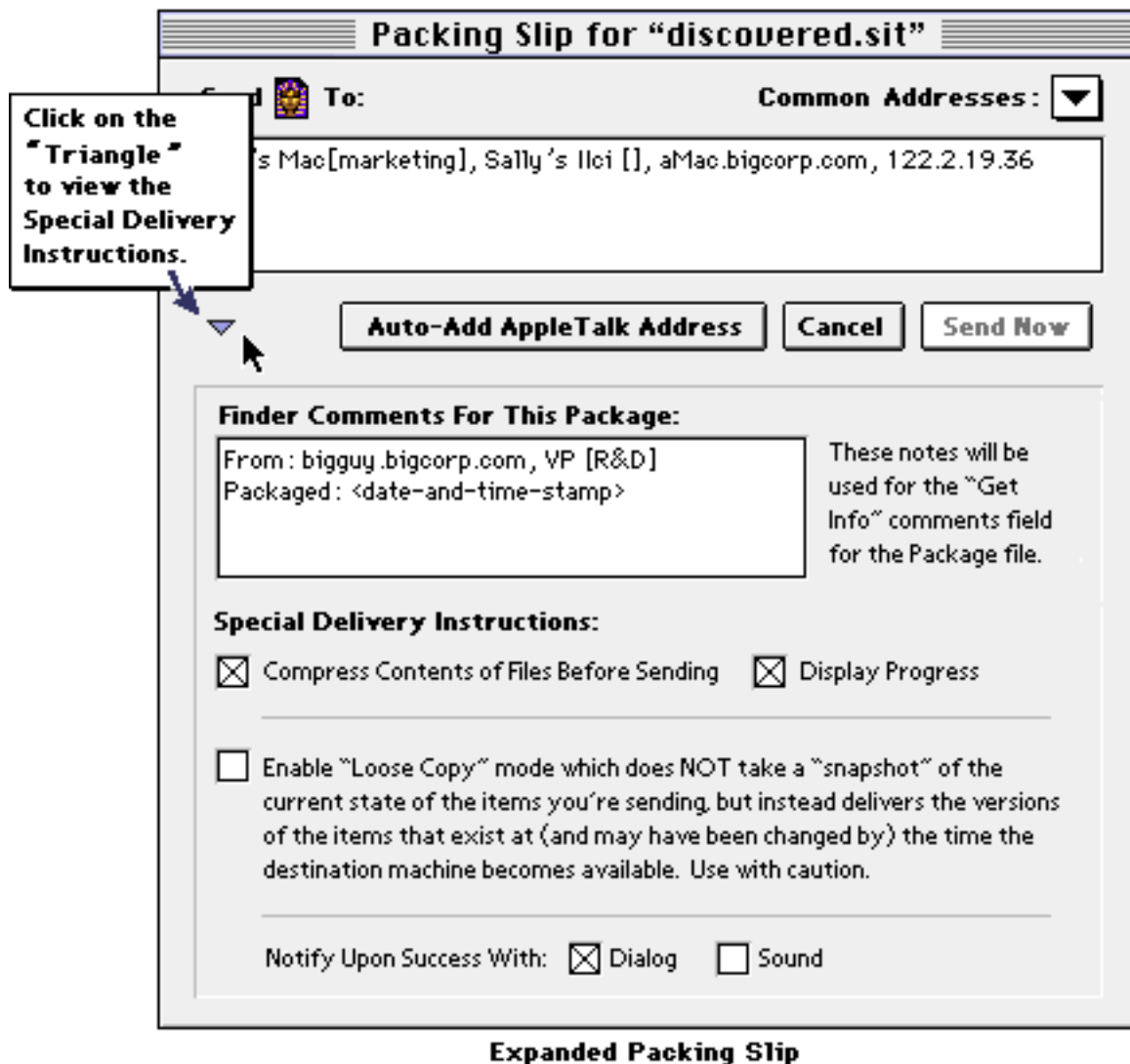
Furthermore, if the destination machine is turned off, not running an FX•Engine, or is simply too busy to accept your file, File eXpress will continue to keep trying to deliver that file for three days before posting a ‘failure’ alert notifying you of the problem (eg. “Not enough free space on the destination machine” or “A destination address could not be located”.) Files that are currently “pending” delivery can be viewed by selecting the “View Queue...” option from the “eXpress” menu in the FX•Packager. Completed deliveries will be listed in the File eXpress logs which can be viewed by selecting “View Logs...” from the “eXpress” menu.

When Drag-and-Drop Doesn't Seem to Work

If the FX•Packager icon isn't “hiliting” when you drag an item over it, you may need to “rebuild” your desktop's database file by holding down the Command and Option keys the next time you boot your machine. Before the Finder mounts your hard drive, if it detects that the Command and Option keys are depressed, it will display a dialog box asking if you want to rebuild your desktop file. If you would like to send items via File eXpress's Drag-and-Drop interface, you'll need to click on the “OK” button to rebuild your desktop. Note, as an alternative, you may always use the “Send Item...” command listed under the File menu of the FX•Packager to send items to other File eXpress users without rebuilding the Finder's desktop database file.

Changing the Default Shipping Instructions

In addition to specifying the addresses for the destinations or your packages, the packager also provides some “Special Delivery Instructions” that can be reached by clicking on the “Expand Triangle” located in the bottom left corner of the standard Packing Slip.



As shown above, the Expanded Packing Slip dialog allows the user to change the default delivery instructions for just the current package. By default, the Packager will place a sender/time-stamp into the Comments field of the delivered Package. In the “Finder Comments Field” you can append your own notes to provide some info concerning the contents of the package. Further, by checking the appropriate item you may:

- Enable or disable the “Compress Contents of Files Before Sending” option. When enabled, the FX•Engine will compress items being sent before shipping

them across the network. This minimizes the amount of data shipped across the network as well as the storage space required on the destination machine's hard drive.

- Enable or disable the “Display Progress” option. When enabled, the packager will display a dialog box that provides feedback as the delivery progresses, much in the same way the Finder displays a progress dialog when you copy a file from one disk to another.
- Enable or disable the “Loose Copy” option. When this option is disabled (which is its default setting), the FX•Packager takes a “snapshot” of the files or folders you drop on the packager icon that is then used by the FX•Engine when it delivers your package. By default the packager has the engine literally copy your original documents into a “package” file that will remain unchanged until the package is delivered. Hence, any changes you might make to the files before they are actually delivered will *not* be reflected in the copies that are delivered. You may even delete the original document or folder, knowing the FX•Engine has its own snapshot of that document in the package file that will be delivered when the destination(s) become available.

When the “Loose Copy” mode is enabled though, the FX•Packager will *not* take a snapshot of the current state of the items you are putting into the package for delivery. Instead, the FX•Engine will transfer the version of the file that exists at the time the delivery actually occurs. The advantages of using “Loose Copy” mode are that it requires less drive space on your machine (as there are no snapshot files) and runs faster as it doesn't have to first copy the items to send into a separate “package.”

Bear in mind that the “Loose copy” mode makes it difficult to know exactly what version of a file is actually delivered to the selected destinations. For example, if you are working on a weekly report and decide to send it to ten separate destinations and then continue to work on that same report, it is possible for each of the ten destinations to receive a slightly different version of the report if you save frequently enough while working on the document.

- Enable or disable the “Notify Upon Success With” options. The packager allows you to choose to display a notification dialog and/or play a sound when a package has reached all of its destinations successfully. Note, you may use the “View Queue...” option under the “eXpress” menu to examine the state of any pending deliveries at any time.

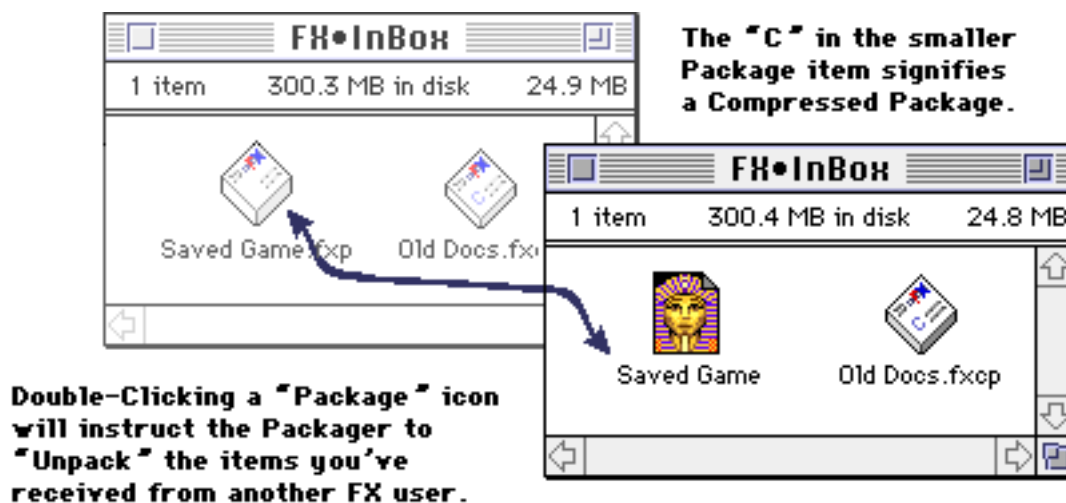
Note, the default shipping instructions (and other File eXpress defaults) can be set using the “Preferences” option under the “eXpress” menu of the FX•Packager.

Receiving Packages and Extracting Their Contents

As long as you have a copy of the FX•Engine running on your machine, the receipt of packages sent to you by other File eXpress users is handled automatically. Any time a package arrives, File eXpress will place the received item in the folder named “FX•InBox” on your desktop. Remember, if you're not running an FX•Engine on your machine, you'll have to launch the

engine by double-clicking on its icon in the Finder or explicitly turning it on with the FX•Control panel before you'll be able to receive any packages from other users. As a background application, you probably won't even notice that the engine is running on your machine until you discover a package in your FX•InBox. So to verify that the FX•Engine is indeed running, keep an eye on the FX•InBox icon in the Finder. If you see "network cables" attached to your FX•InBox, then you know your engine is ready to send or receive packages.

By default, individual files and folders that have been shipped as File eXpress packages aren't "unpacked" until you double-click on them in the Finder. You'll find a package file in your "FX•InBox" folder that contains the file or folder that was shipped to you from another File eXpress user. This allows you to work with the entire package as a single unit until it's time to look inside. Further, "packaged" folders (which may contain numerous files) often take less space on your hard drive than "unpacked" folders. This is true even if you're not using compression as multiple files are literally stuffed end-to-end into a single package file - eliminating the wasted space that often appears at the tail end of each individual file.



You'll recognize your File eXpress packages by the ".fxp" extension (or ".fxcp" extension for compressed packages) that has been added to the name of the original item. Take a look at the section on preferences below if you'd prefer to have File eXpress automatically unpack your packages upon receipt.

As additional feedback, the "network cables" attached to the FX•InBox icon will change color (or pattern for B&W monitors) while a package is being received if you have the Finder Scripting extension installed on your machine. When the "network cables" return to their normal appearance, the file transfer is complete and you'll find a new package in your FX•InBox.

NOTE: As of 4/6/96 the glowing cables feature was disabled after discovering a memory leak in the Finder - we'll turn the "Glowing Cables" back on in a net-borne upgrade when Apple releases a fix for Finder Scripting.

Defining Your Personal Preferences

File eXpress provides an array of options that you can control via the "Preferences..." command found under the "eXpress" menu in the FX•Packager and the FX•Control panel in your Control Panels folder. You'll use the packager's preferences dialog to set your default "Shipping" instructions. You'll use the FX•Control panel, on the other hand, to set the default "Receiving" instructions for how the FX•Engine should respond when any (and all) files arrive in your Inbox from other users. Although the separation may seem confusing at first, remember that the FX•Packager is just one possible 'shipping client' of the FX•Engine and that you may create other tools with AppleScript or HyperCard that could use the engine to ship packages on their own. Hence, the Packager only controls the preferences for its "Packing Slip" User Interface.

Setting Your Default Shipping Instructions

Upon selecting the "Preferences..." command in the packager, the following dialog will allow you to set your default shipping instructions. As you might expect, the controls under the "Default Shipping Instructions" allow you to define the defaults for the "Packing Slip" dialog box you see when you drop items on the packager's mailbox icon.

To save your settings simply click on the "Save Settings" dialog box, or, if you would rather leave things the way they were when you opened the Preferences dialog box, click "Cancel".

FH•Packager Preferences

Default Shipping Address: **Auto-Add AppleTalk Address**

Auto-Ship if Command Key is: Up Down

Default Delivery Instructions:

Compress Contents of Files Before Sending Display Progress

Enable "Loose Copy" mode which does NOT take a "snapshot" of the current state of the items you're sending, but instead delivers the versions of the items that exist at (and may have been changed by) the time the destination machine becomes available. Use with caution.

Notify Upon Success With: Dialog Sound

Cancel **Save Settings**

Packager Preferences Dialog Box

The **Default Address List** setting of the "Default Shipping Instructions" pane allows you to specify a list of default destination addresses. These default addresses will then appear in the "Send To" area of each packing slip you fill out after clicking on the "Save Settings" button. If you often send to the same address, setting this default will save you from having to type in that address every time you drop an item on the packager's mailbox icon.

Closely tied to the Default Address List, is the **Auto-Ship** option that allows you to tell the packager to skip the packing slip dialog and simply send the items that were dropped on the packager directly to the machines listed in the Default Address List. Note, this option is only available when a Default Address List has been set - you can't Auto-Ship to an empty address list.

When enabling Auto-Shipping, you must also specify if Auto-Shipping should occur if the Command Key was "Up" (i.e., not pressed) or "Down" (i.e., pressed) when the items to send were dropped on the mailbox icon. By default, and by far the safest option, File eXpress will

only Auto-Ship to the destinations in the default address list if the Command Key is “Down.” If the command key isn’t down, the standard packing slip will appear - allowing you to change the address list or other delivery instructions before explicitly shipping the package by clicking on the “Send Now” button.

For the strong at heart, if you almost always send to the same address, setting Auto-Ship to occur if the Command Key is “Up” (i.e., not-pressed) will ship every item dropped on the mailbox icon in the Finder to the destinations in the default address list *unless* you explicitly hold down the Command Key while dropping those items. In addition to holding down the Command Key to acquire a Packing slip when you have the Auto-Ship set for when the Command Key is “Up”, you may always select “Send Item...” from the “File” menu in the FX•Packager to explicitly request a Packing Slip.

The **Compress Before Sending** checkbox allows you to specify whether the packager will default to compressing packages before shipping them to their destinations. Compressing files and folders before shipping usually reduces the amount of data you’ll be sending across the network which in turn reduces the hard disk space your packages will consume on their destination machines. For example, the Microsoft Word version of this document (with pictures) consumes 306K of disk space when shipped uncompressed, but only 136K when File eXpress compresses the document before sending. Note, File eXpress has been optimized to compress documents, so your “mileage” on application and system files may vary.

The **Display Progress** checkbox allows you to specify whether packager will default to displaying a progress dialog box when shipping a package. Displaying a progress window will allow you to monitor where File eXpress is in the shipping process, but it won’t keep you from getting back to your work as you can move the progress window behind your other windows while File eXpress continues to work in the background.



The **Enable “Loose Copy” Copy Mode** allows you to instruct the engine to skip the default behavior of copying of each item to be sent into a “package” file before sending. By default, the packager instructs the engine to take a “snapshot” of the files or folders you are sending which will then be used by the engine when it delivers your package; the packager has the engine literally copy your original items into a “package” file that will remain constant until the package is delivered. Hence, any changes you might make to the items before they are actually delivered will *not* be reflected in the copies that are delivered. You may even delete the original document or folder, knowing the FX•Engine has its own snapshot of that document in the package file that will be delivered when the destination(s) become available. Again, by default, the engine will deliver the versions of the files that were originally placed in the package file, not the versions that may exist by the time the delivery occurs.

When the “Loose Copy” mode is enabled though, the FX•Packager will *not* take a snapshot of the current state of the items you are putting into the package for delivery. Instead, the FX•Engine will transfer the version of the file that exists at the time the delivery actually occurs. The advantages of using “Loose Copy” mode are that it requires less drive space on the originating machine (as there are no snapshot files) and runs faster as it doesn’t have to first copy the items to send into a separate “package.”

Bear in mind that the “Loose copy” mode makes it difficult to know exactly what version of a file will actually be delivered to the selected destinations. For example, if you are working on a weekly report and decide to send it to ten separate destinations and then continue to work on that same report, it is possible for each of the ten destinations to receive a slightly different version of the report if you save frequently enough while working on the document.

The **Notify When Delivered** options allow you to specify if File eXpress should provide explicit feedback by default when a package has been delivered to its destination. You may choose to have File eXpress default to providing either a dialog box, an audible sound, or both by setting the check boxes for the appropriate items.

Note that all of the default shipping instructions can be modified when you complete an actual Packing Slip. The preferences dialog box simply allows you to define how you’d like the packager to pre-set the options before displaying them.

Setting Your Default Receiving Instructions

The Control Panel “FX•Control” is used to establish your default receiving instructions. Whereas you use the Packager to send packages, the Control Panel is used to configure the FX•Engine which receives packages. Note, you’ll also use this Control Panel to establish which network protocols the Engine should support.



"FX•Control" Control Panel

While in FX•Control, Enabling the **Auto-Unpack Packages Upon Receipt** option tells the FX•Engine to unpack the files and folders contained in incoming packages as they arrive rather than waiting for you to explicitly “open” the package at a later time. For example, if this option is enabled, files sent to your machine will be automatically extracted from the arriving package and placed in your FX•InBox folder. If an entire folder is automatically unpacked, you’ll be able to see each file and sub-folder contained in the folder appear in your FX•InBox without having to “unpack” the package. If you’re not using compression, rarely receive entire folders, or might not have enough disk space to hold the package and its resulting unpackaged contents at the same time, turning this option on can save you the time of having to “double-click” on the package file to unpack its contents once it has arrived. On the other hand, if you do receive entire folders or are using compression, leaving files in their packaged form until you really need them will usually save a sizable amount of space on your hard drive.

The **Notify Upon Receipt** option allows you to specify how File eXpress should inform you that a package has arrived and been placed in your FX•InBox folder. Selecting the “Dialog” option will tell the FX•Engine to display a dialog box informing you of the package’s arrival, whereas the “Sound” option will play an audible sound after each package has arrived.

Controlling File eXpress via AppleScript

Don't forget, File eXpress is a fully recordable and scriptable application! So those of you who would like to create your own scripts to send packages to other machines have complete access to File eXpress's document transfer capabilities from within any AppleScript capable scripting environment. To examine the File eXpress commands that are available on your own, use Apple's Script Editor to open the AppleScript Dictionary contained in the FX•Packager application or simply record your interactions with the packager to see how things are done.

You might decide to create scripts to automatically backup project folders at the end of the day, or to create "droppable" icons on your desktop with default destinations that provide "virtual mail slots" for each of your favorite destinations - simply drop a file on the AppleScript program that sends the correct AppleScript commands to the packager and you're off!

For example, the script below (which was recorded using Apple's Script Editor) copies a "Work In Progress" folder to another File eXpress user over AppleTalk for backup purposes:

```
tell application "FX•Packager"
  activate
  net copy {file "Gullchow:Matt's HWIP:"} to
    "Ruskin Central[*]" with preferences
    {Compress Before Sending:yes, Display Send Progress:yes}
end tell
```

Another example below shows the source for a "droplet" that will ship any item dropped on it to the destination defined as *theTarget*:

```
choose file with prompt "Choose the file to be sent:"
open (result as list)

on open (thelist)
  -- Change the assignment below to the machine you would like this
  -- droplet to use as its destination. Note, you may specify more than one destination!
  -- For example: set theTarget to {"layla["]}
  -- For example: set theTarget to {"layla[" , "clapton.ruskin.com"}
  set theTarget to {}

  if theTarget is {} then
    display dialog "Please edit the script to specify a 'target' destination for files
dropped on this droplet."
  else
    tell application "FX•Engine"
      -- You can change the preferences below to suite your own personal needs
      request net copy thelist to theTarget -
        with preferences {Compress Before Sending:yes, Play Sound When Done:yes,
        Show Dialog When Done:no}
    end tell
  end if
end open
```

Yet another example, this one taken from the Reader Card of the FX•Mailer Stack included with this release, asks the FX•Packager to unpack a file that has been found in the FX•InBox by another script:

```
-- FX•Mailer - asUnpackMail Button
-- Last Modified: 8/12/95 by MMM
-- A freeware script provided by the Ruskin Group, Inc.

-- This handler sends an "unpackage" request to the FX•Packager
-- to unpack an FX•Mailer message that was found in the FX•Inbox.

on unpackMail(fileName)

    try

        tell application "FX•Packager"
            unpackage {file fileName} with preferences
                {Display Unpackage Progress:no}
        end tell

    on error errText
        display dialog "Dang! " & errText &
            "" Could not unpack message."
    end try

end unpackMail
```

Be sure to check out all the scripts in the FX•Mailer for more examples of how you can use your favorite script aware environment to control File eXpress. For your convenience, we've placed all of the AppleScript scripts in the FX•Mailer in hidden buttons whose names have been prefixed with "as" to help you identify them (e.g., "asUnpackMail".) These buttons that can be found by holding down the "Option" key and clicking on the text "FX" found in the upper left corners of both the Reader and Compose Cards of the FX•Mailer stack.

If, while using your FX•Mailer Stack, you find that you are frequently being asked to locate your copy of "FX•Packager", you should recompile the FX•Mailer scripts associated with the AppleScript buttons to ensure those scripts can locate your copy of the Packager.

Copyright Notices

All of the documentation and software components of the File eXpress system are Copyrighted by the Ruskin Group, Inc.

All brand and product names are trademarks or registered trademarks of their respective holders.

FILE EXPRESS USAGE AGREEMENT:

DO NOT USE THIS SOFTWARE UNTIL YOU HAVE CAREFULLY READ THIS LICENSE AND AGREE TO COMPLY WITH THE USAGE REQUIREMENTS DEFINED HEREIN. BY USING ANY SOFTWARE COMPONENT OF THE FILE EXPRESS SYSTEM (COMPOSED OF THE FX•PACKAGER AND FX•ENGINE APPLICATIONS) YOU ARE AGREEING TO COMPLY WITH THE TERMS OF THIS LICENSE.

After reading this entire document, if you agree to be bound by this license, click on the "Agree to License" button in the agreement dialog box that is displayed the first time you run the FX•Packager on your machine. If you are unwilling or unable to follow the terms of this license, click on the "Exit File eXpress" button to leave your machine untouched.

Your rights and obligations with respect to the use of this software:

This license grants you the right to use the Shareware release of the File eXpress components for any non-commercial purposes without registering or paying any usage fees. The Ruskin Group, Inc. retains complete ownership of the Shareware release software, you are granted a license only to use the software for non-commercial purposes.

The complete set of File eXpress components (including the FX•Packager and FX•Engine applications, documentation, registration form and this license) may be freely distributed only if they are duplicated together as one folder and in their original, unaltered form. The complete set of File eXpress components may be distributed via any network or on-line service provided that the only charges for distributing this software do not exceed the reasonable downloading fees charged by the network or on-line service provider. This software may not be republished or bundled on any physical medium for distribution with any other software or computer related hardware, or used as part of any commercial or revenue-generating process, system, or service without the explicit written consent of the Ruskin Group, Inc.

If you plan to use the software as a part of a revenue generating product or service you must contact us by sending email to dobil@tasman.hss.cmu.edu, or writing:

Ruskin Group, Inc.
File eXpress Registration
6401 Wilkins Avenue
Pittsburgh, PA, 15217 - USA.

Disclaimer of Damages:

This software is licensed "AS IS". It is solely the responsibility of the user to determine the software's suitability for a particular use or purpose. The Ruskin Group, Inc. makes no warranty or representation, either expressed or implied, regarding the functionality, performance, or fitness of this software or the documentation provided with it. The Ruskin Group, Inc. will in no event be liable for any special, consequential, indirect or similar damages resulting from the use of this software resulting in any interruption of service, loss of business, profits or good will, legal actions or other consequential damages. The user assumes all responsibility arising from the use of this software. The Ruskin Group, Inc. will be neither responsible nor liable for any illegal use of this software.

Some states do not allow the limitation or exclusion of liability for incidental or consequential damages so the above limitation may not apply to you. In no case shall the Ruskin Group's liability exceed the purchase price for the software.

Ruskin Group, Inc., 6401 Wilkins Avenue, Pittsburgh, PA 15217

All other rights remain reserved by the Ruskin Group, Inc.
FX•Packager & FX•Engine © 1996 Ruskin Group, Inc.
We can be reached via email at dobil@tasman.hss.cmu.edu.

Ruskin-MMM-06/24/96